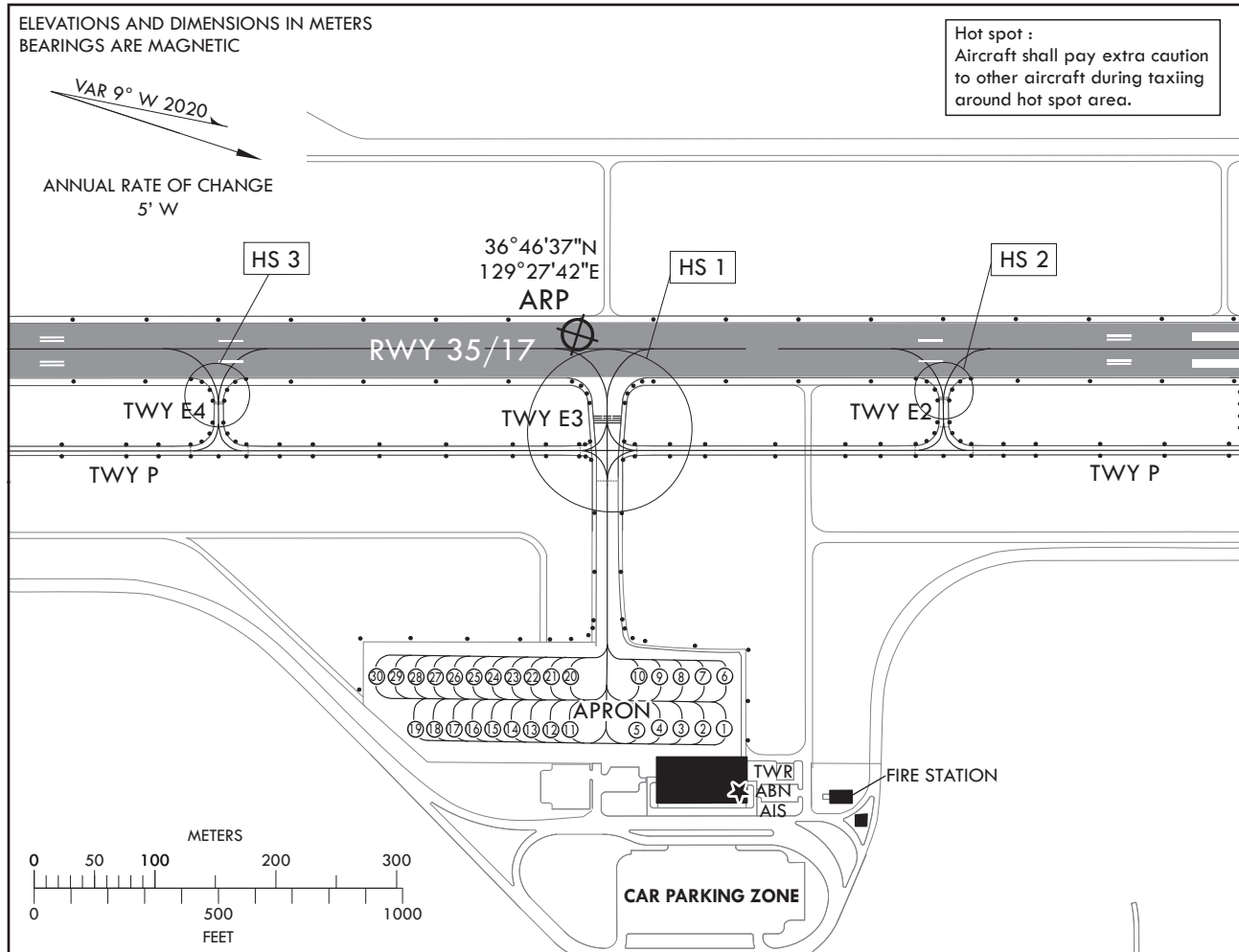


AIRCRAFT PARKING /
DOCKING CHART - ICAO

APRON ELEV
51 m

TWR	118.55	317.45
GND	121.775	317.45

ULJIN / 울진



INS COORDINATES FOR AIRCRAFT STANDS (WGS-84)

1	36°46'43.90"N 129°27'53.14"E	11	36°46'39.92"N 129°27'54.68"E	21	36°46'38.99"N 129°27'53.14"E
2	36°46'43.35"N 129°27'53.35"E	12	36°46'39.43"N 129°27'54.88"E	22	36°46'38.50"N 129°27'53.34"E
3	36°46'42.79"N 129°27'53.57"E	13	36°46'38.93"N 129°27'55.07"E	23	36°46'38.00"N 129°27'53.53"E
4	36°46'42.23"N 129°27'53.75"E	14	36°46'38.43"N 129°27'55.25"E	24	36°46'37.50"N 129°27'53.72"E
5	36°46'41.67"N 129°27'54.05"E	15	36°46'37.94"N 129°27'55.45"E	25	36°46'37.01"N 129°27'53.91"E
6	36°46'43.47"N 129°27'51.41"E	16	36°46'37.44"N 129°27'55.64"E	26	36°46'36.51"N 129°27'54.10"E
7	36°46'42.91"N 129°27'51.62"E	17	36°46'36.95"N 129°27'55.83"E	27	36°46'36.02"N 129°27'54.29"E
8	36°46'42.35"N 129°27'51.84"E	18	36°46'36.45"N 129°27'56.03"E	28	36°46'35.52"N 129°27'54.48"E
9	36°46'41.80"N 129°27'52.06"E	19	36°46'35.96"N 129°27'56.22"E	29	36°46'35.03"N 129°27'54.68"E
10	36°46'41.24"N 129°27'52.27"E	20	36°46'39.48"N 129°27'52.95"E	30	36°46'34.53"N 129°27'54.87"E

AIRCRAFT STANDS		
ALL STAND	CESSNA 172, PA44, DA42	
	WIDTH	STRENGTH
E1	26 m	PCR 212/F/A/Y/T Asphalt
E3	18 m	PCR 313/F/B/X/T Asphalt
E5	27 m	PCR 212/F/A/Y/T Asphalt
E2, E4, P	8 m	PCR 212/F/A/Y/T Asphalt
APRON	NIL	1~10 : PCR 416 R/C/X/T Concrete 11~30 : PCR 212 F/A/Y/T Asphalt

TAXIWAY EDGE LIGHTS ON ALL TAXIWAYS

LEGEND	
E1, E2, E3, E4, E5, P	Taxiway
①	Aircraft Stand Number
●	Taxiway Light
≡≡≡	Precision Runway Holding position
-----	Intermediate Holding Position
○ HS	Hot Spot

Change : Information of strength(PCN → PCR) for TWY and apron.

INTENTIONALLY

LEFT

BLANK